

SAN DIEGO COUNTY WALK AUDIT

AUDITOR NAME & ORGANIZATION

Jazmin Cardona, COI Community Council

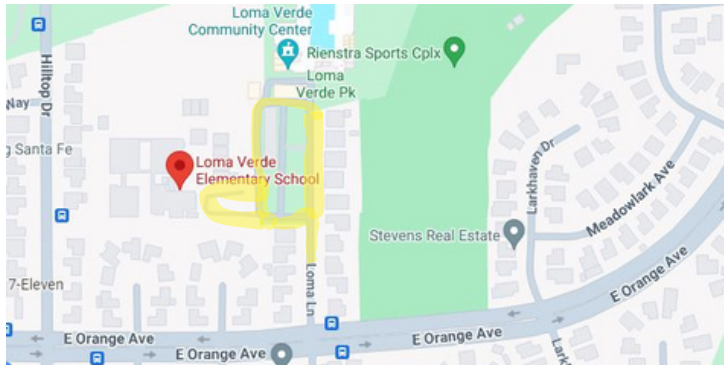
AUDIT LOCATION

Loma Verde, Chula Vista

AUDIT DATE

02/29/2024

MAP OF AREA AUDITED



Loma Ln including the school parking lot area Loma Verde, San Diego 91911

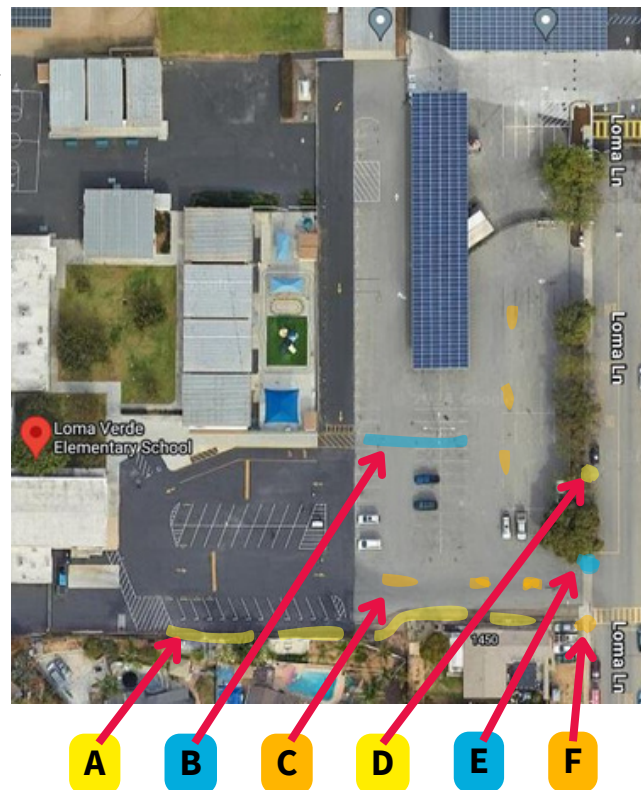
Primary focus within Loma Verde Elementary shared parking lot

Loma Verde is a neighborhood in Chula Vista with access to several parks, recreational facilities, and green spaces

WALKING CHALLENGES: WHAT MAKES IT DIFFICULT OR UNSAFE TO WALK?

- **A-** This sidewalk needs improvement: it is partially dirt and contains cracks that pose a safety concern to pedestrians
 - Families take this path that starts on Loma Ln to Loma Verde Elementary
- **B-** Painted walkway is needed
 - Pedestrians/families have to walk into traffic areas to get in/out of their cars and a painted walkway would help families cross the traffic area
- **C-** Paint traffic direction arrows on asphalt between lanes in the parking lot area
 - The right side of the parking lot is missing traffic direction arrows on the asphalt
- **D-** This sidewalk needs improvement: - There is a crack higher than 2 inches, which can endanger pedestrians and disabled people
- **E-** “Do Not Enter” traffic sign needed and/or permanent traffic cones to stop cars from entering this prohibited way
- **F-** This crosswalk on Loma Ln needs a new “School Zone” sign and a pedestrian crossing road sign with blinking lights

Map of Parking Lot for Loma Verde Elementary and Community Center



SAN DIEGO COUNTY WALK AUDIT

NOTES AND PHOTOS

- Loma Verde Elementary sits in the City of Chula Vista, 5 miles from the US-Mexico international border
- The student population of Loma Verde Elementary (K-5) is 542 and about 90% of students identify as Hispanic/Latino
- Loma Verde Elementary sits next to Loma Verde Park, a 6.28-acre neighborhood park, that includes South Bay Little League and the Loma Verde Community Center
- The Loma Verde Community Center includes the Loma Verde Aquatic Center and Fair Winds Family Resource Center
- Loma Verde Elementary and Loma Verde Community Center share a parking lot that becomes congested with traffic at drop off/pick up times



The walkway that leads into the school parking lot needs to be extended for families to safely cross traffic



The exit of school parking lot needs a clear "Do Not Enter" sign and the crosswalk on Loma Ln needs a pedestrian crossing road sign



Dirt path that leads to Loma Verda Elementary from Loma Ln needs pavement and maintenance



Traffic direction arrows are missing on one half of the school parking lot

RECOMMENDATIONS

- The school parking lot needs improvement and maintenance (see map above) since many students and families pass through the parking lot to reach/leave from Loma Verde Elementary
- This includes installing new traffic signs and pedestrian crossing road signs on crosswalks leading into the school parking lot